

# BED BUG SLASHER

Thank you for your purchase of The Bed Bug Slasher, the market leading device that detects, traps and kills bed bugs.

**Directions for Bed Bug Slasher Guard-Post Unit: The best time to place the traps is right before you go to bed. Bed Bugs typically come out at night.**

Step 1 – Place the unit where you want to help protect yourself. Good ideas for placement are beside headboards; where you store your luggage, next to your shoes, in laundry rooms; next to sofas; near open wall cracks

Step 2 – Place eight (8) Bed Bug Lure tablets and empty two (2) pouches of Bed Bug Lure Powder into the clear 16oz bottle.

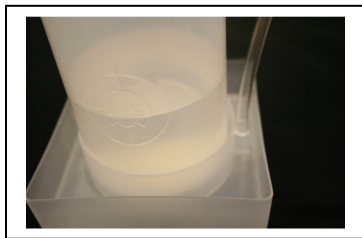


Step 3 – Near a sink, fill clear bottle with warm water to the **12oz line**.

Step 4 – Put the top on the clear bottle and connect one end of the tube. Swirl the water around in the bottle for about 15-20 seconds.



Step 5 – The clear bottle can be placed in the bottle holder in the middle of the trap. Attach the other end of the tube into the Moat Trap on the small nipple that the tube fits over. It will take about 10-15 min for the bed bug lure to start producing carbon dioxide in the bottle.



Optional – To turn the Bed Bug Trap from a detector and trap into a killing device, coat the open part of the trap (the moat) with Diatomaceous Earth (DE) provided. Use the squeeze bottle to spray out the powder to coat the surfaces. The bottle will cover multiple traps several times. The DE slowly slashes and cuts up the bed bugs. Spraying bed bugs directly doesn't kill them instantly. Wait a few days and any trapped bed bugs should all be killed.

## Cleaning

Bed Bugs will be slashed into such small pieces that they will not leave a lot of residue. Unless lined with bed bug carcasses, you will not need to clean out the trap very often. Leaving the traps in place, simply take a slightly moist paper towel, wipe out the contents, put contents and paper into a clear plastic bag (there may be some living bugs present), seal and throw in the trash. If you are done with the trap, after cleaning you can put it in the recycling bin. The bottle with the CO<sub>2</sub> ingredients can be safely dumped down the sink.

## Re-use

**Each night, swirl the water around in the bottles to maximize the CO2 creation. You will need to refresh the carbon dioxide creation (tablets, ingredients, and water) about every couple of days.** To do this, dump the water, rinse the bottle and then repeat steps 2-5.

Additional lures and diatomaceous earth can be purchased from where you bought the Bed Bug Slasher or go to [www.bedbugslasher.com](http://www.bedbugslasher.com)

Even if you think you are clear of bed bugs, we strongly recommend you keep the traps in place even without the CO2 lure being active. This will act as a very efficient monitor and trap for any bed bugs that may be present. Replenish the CO2 every 6-8 weeks to ensure there is no new bed bug infestation.

## How the Bed Bug Slasher Guard-Post Works

One – Bed Bugs that are in luggage, clothing, or in the general area will be attracted to the CO2 coming from the bottle and tube in the center of the Bed Bug Slasher, crawl in, and become trapped.

Two - Your Bed Bug Slasher© system includes an organic mechanical killer (not a pesticide) called *diatomaceous earth* - a powder consisting of fossilized algae, which to us simply looks like flour, but under a microscope looks like tiny shards of glass. When the bed bugs come into contact with it, they will be gradually be cut up and die of dehydration. This is not a bed bug exterminator with pesticides in it. **The Bed Bug Slasher© does not use chemicals.** Instead, the diatomaceous earth included in the Bed Bug Slasher© system is classified by the FDA as an organic, food grade product.

## Please Read these important notes and precautionary statements prior to usage:

- The ingredients are all environmentally friendly, and can safely be rinsed down the sink.
- The Bed Bug Lure tablets and powders are natural products found in a common kitchen.
- The Diatomaceous Earth we use can be classified as a food grade product and in limited quantities is sometimes consumed by both animals and people. However, we are in the business of bed bugs, and as such we do not recommend this product for human or animal consumption.
- Be careful when lifting furniture so the Sleep-Safe Unit can be placed underneath. Proper care and form should be used so as to avoid injury.
- Do not block the ends of the tubing.
- Do not overfill the bottles or add additional ingredients or quantities to the bottles.
- Be careful where placing the bottles to avoid knocking them over
- Care and caution should always be used when placing the Bed Bug Slasher units around children or animals.
- The Bed Bug Slasher is not a complete eradication tool and should be used in conjunction with other recommended methods in dealing with bed bugs.

Patent Pending

EPA Est. No. 67197

Customer Support - [info@bedbugslasher.com](mailto:info@bedbugslasher.com)

Website - [www.bedbugslasher.com](http://www.bedbugslasher.com)

